



About this Weave

Unlike Single Spiral, Double Spiral (sometimes called Rope) holds its shape and won't untwist.

Suggested Base Metal Ring Sizes & Counts

Rings Per Inch (and for 7.5" of material)

F20 = 25 rpi (188)
20ga SWG 5/32" (4.0 mm)

J18** = 19 rpi (144)
18ga SWG 7/32" (5.6 mm)

**a little tight/harder to weave

L18* = 17 rpi (128)
18ga SWG 1/4" (6.4 mm)

*size used for this tutorial

P16 = 14 rpi (105)
16ga SWG 5/16" (7.9 mm)

Suggested Precious Metal Ring Sizes & Counts

Rings Per Inch (and for 7.5" of material)

F20 = 25 rpi (188)
20ga AWG 5/32" (4.0 mm)

G19 = 22 rpi (166)
19ga AWG 11/64" (4.4 mm)

L17 = 17 rpi (128)
17ga AWG 1/4" (6.4 mm)

*similar to size used for this tutorial

P14 = 14 rpi (105)
14ga SWG 5/16" (7.9 mm)

Weave in a Nutshell

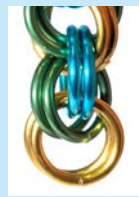
1. Add a ring through the bottom 4.



2. Double the ring.



Repeat!



PREP:

Pre-close 4 rings* and pre-open a large pile.

*This tutorial uses three colors:
Color #1 = gold
Color #2 = turquoise
Color #3 = lime

1. Put 4 closed rings on one open and close the open ring.



2. Weave another open through the 4 closed and close this ring.



3. Divide the group of 4 into two groups of 2 and tie off one group with a wire piece to designate your start point. The wire and the first 2 rings will be removed when you finish.



NOTE: To start the spiral, twist the bottom 2 rings to the right and smooch them upward. Your next rings will go through the bottom two groups of rings. You may want to use a wire to mark the path of your next ring.



4. Add an open ring (color #1) through the bottom 4 rings and close.



5. Double the previous ring by putting a second ring through the same path.



6. The next 2 rings go right through the center of the bottom 4 rings.



TIP: Try to hold the weave in your hand to add these rings.



TIP: If using three colors, the ring you add will weave through the other two colors (2 rings in each other color).

7. Once again, twist the bottom 2 rings to the right and push them up. Your next rings go through the bottom four, in the hole created after you twist and push. These rings are color #2 and match one of the colors you used in step 2 & 3.



8. Now the weave is locked in place, so you won't need to keep twisting. Simply keep weaving 2 rings through the bottom 4 until your piece is as long as you'd like (save room for the clasp.)



Finishing Rings Needed

Small Rings = H18 x 4
18ga SWG 3/16" (4.8 mm)

Tiny Ring = F18 x 1
18ga SWG 5/32" (4.0 mm)

Clasp Ring = L16 x 1
16ga SWG 1/4" (6.4 mm)

9. To finish, add 2 rings as normal (through 4), but use smaller rings for a tapered clasp point.



10. Then attach your clasp with a tiny ring.



11. At the beginning of the chain, remove the wire piece AND the first set of rings.



12. Then weave two smaller rings as you did in step 9. This brings both sides to a tapered, seamless finish.



13. Attach your clasp ring here using a new ring.



You're done!

